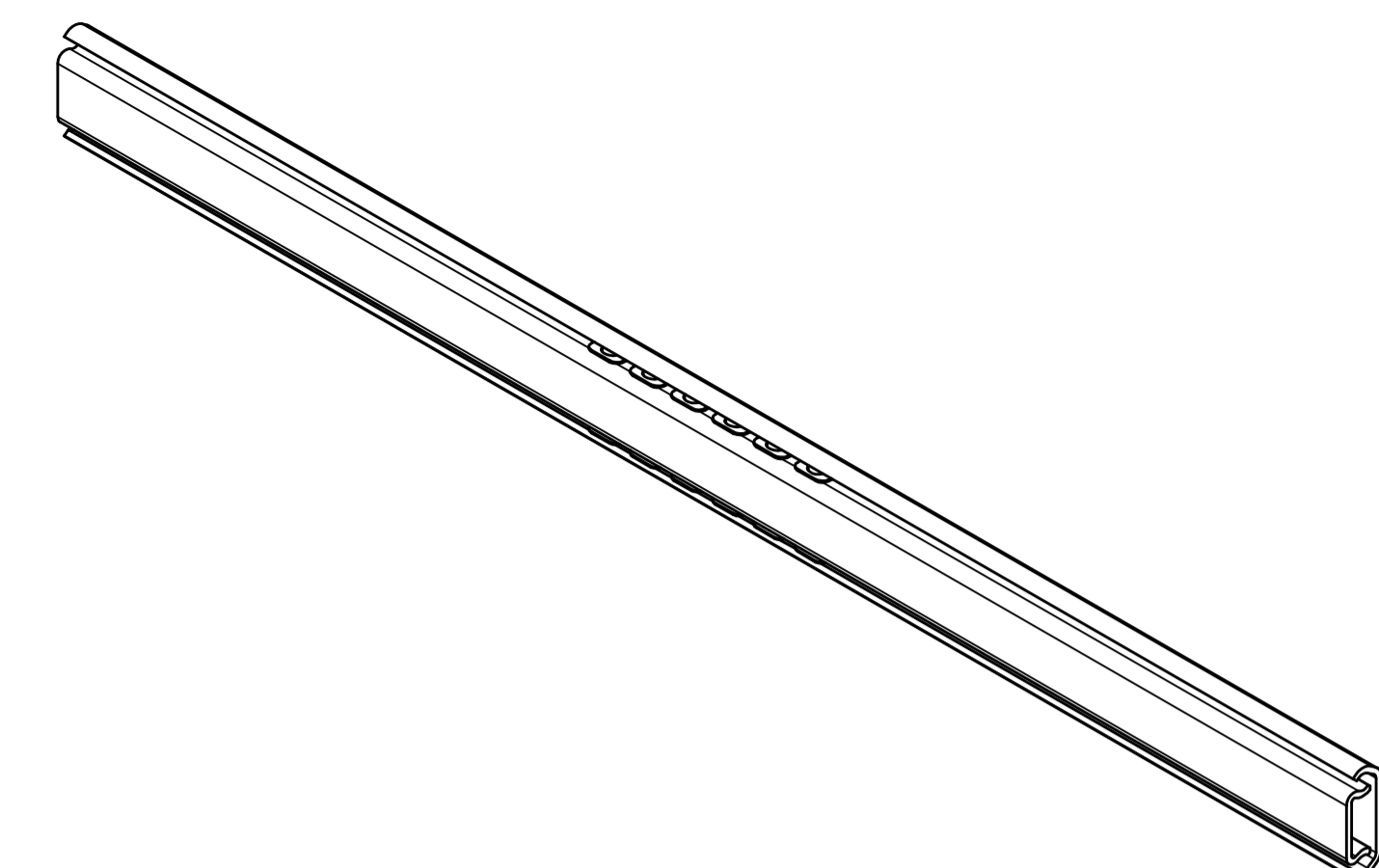
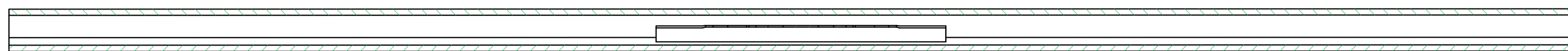


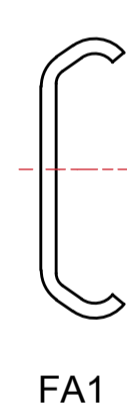
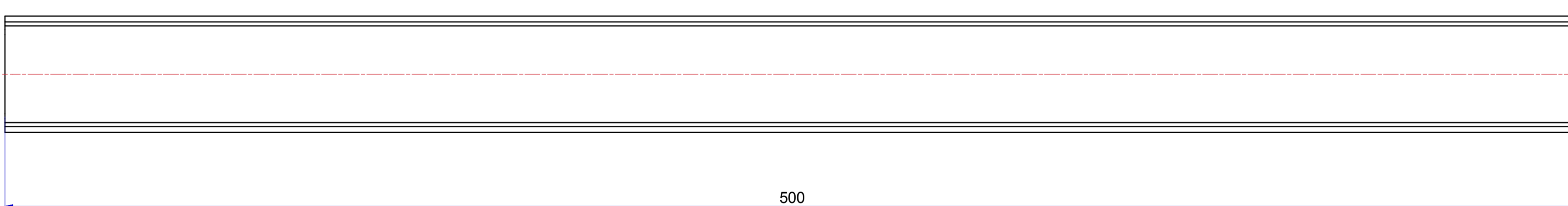
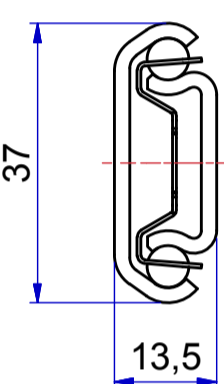
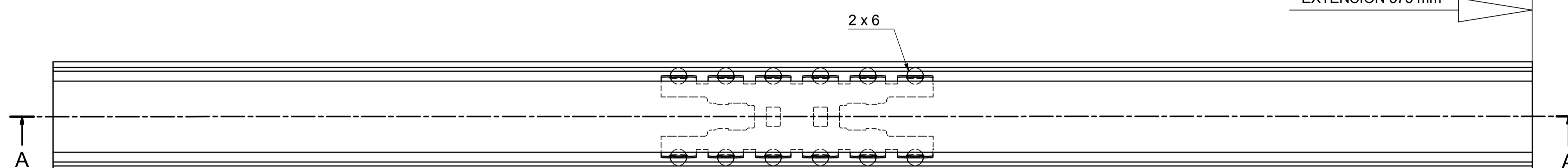
T 1 - 2 = 375,0 mm



A-A (1:1)



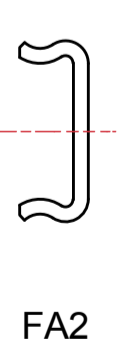
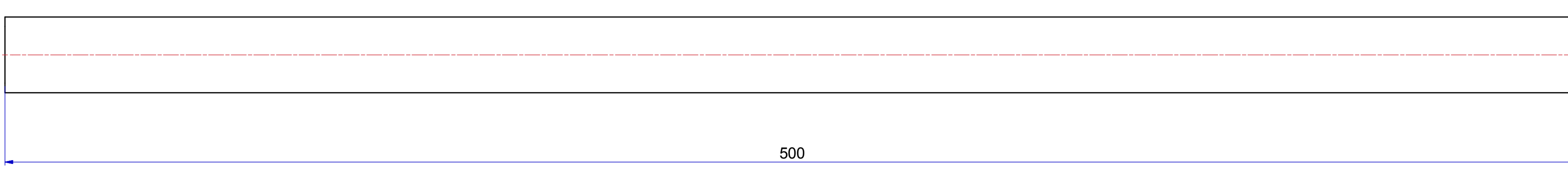
EXTENSION ± 2 375 mm



FA1

500

OTHER DIMENSIONS NEEDED?
CUSTOM MADE SLIDES AVAILABLE UPON REQUEST?



FA2

500

Right hand slide = Left hand slide.
Dimensions between marks are guide dimensions.
Thomas Regout Int. B.V. reserves the right to alter non-customer specific specifications without notice.

03	-	-	-	-
02	-	-	-	-
01	-	-	-	-
Rev	Date	Description	Designer	
Designer	W.Jans	Gen.Tol.Dim. $\pm 0,5$	Third angle projection	Material
Date	8-6-2015	Gen.Tol.Angle $\pm 0,5$	Treatment	
Approver		Gen.Roughness Ra	Draw type Customer	Doc.No. E000031351
Date		Units mm/deg.	Scale 1 : 1	Type Model No. E000031351
Description				
FINN 500.0 / 375.0 (13,5mm)				
				Released for Production
Format	THOMAS REGOUT INTERNATIONAL B.V.		Item No.	Revision
A1			Finn_13.5	00
© THOMAS REGOUT INTERNATIONAL BV, Industrieweg 40, 6219 NR, Maastricht, The Netherlands, +31 (0)43 351 66 66 All rights are reserved.				