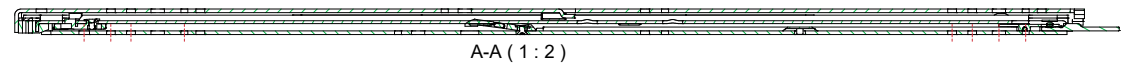
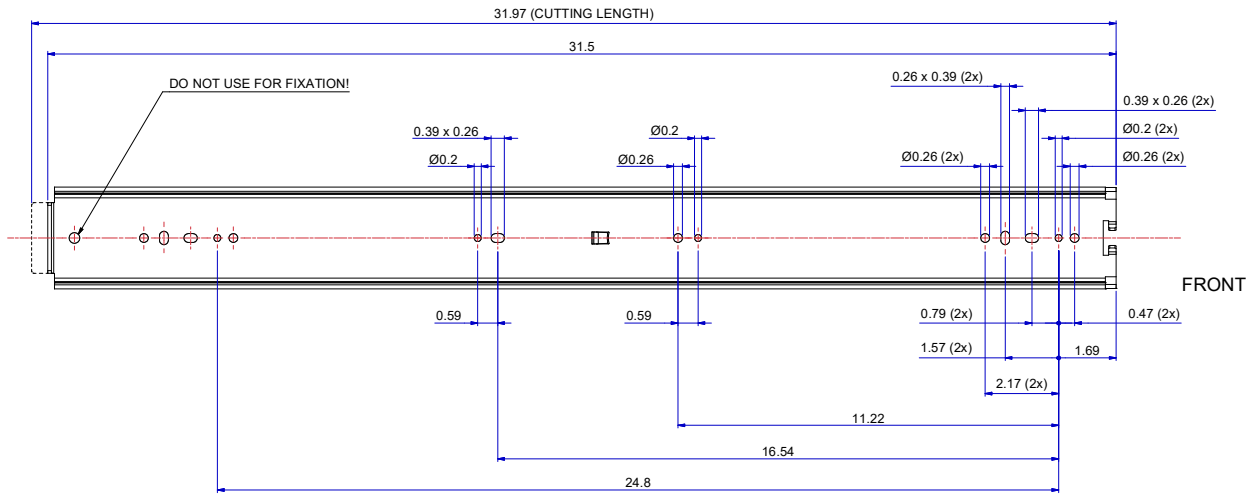
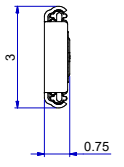
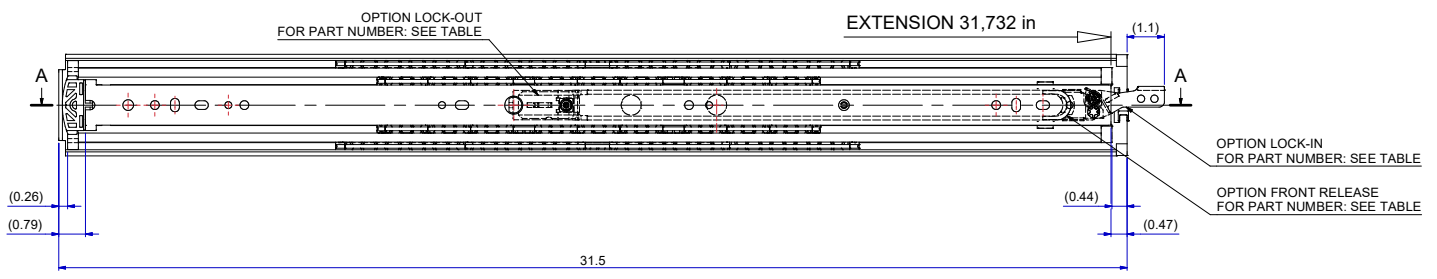


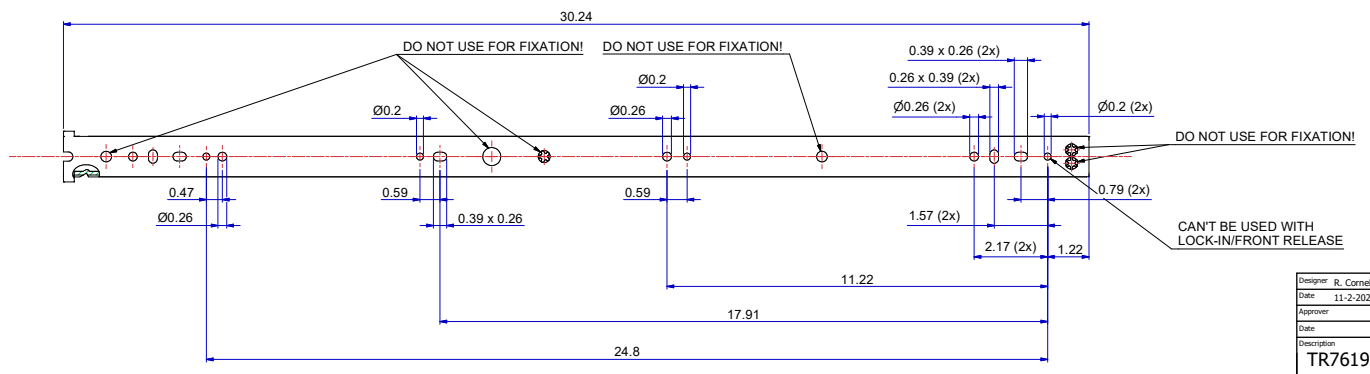
T 1-2 = 15,169 in
T 2-3 = 16,563 in



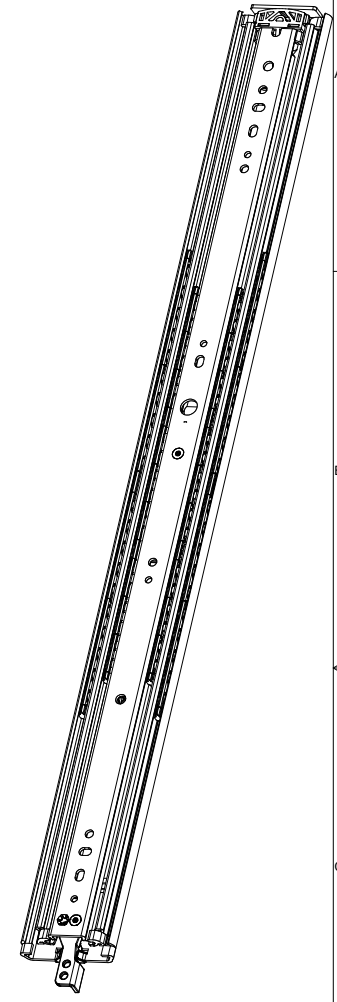
A-A (1:2)



511-14-S39-TC1



513-14-S39-TC3



SLIDE RIGHT HAND = LEFT HAND
LOCK-IN/FRONT-RELEASE
RIGHT HAND SIDE SHOWN, LEFT HAND SIDE IS MIRRORED

DIMENSIONS ARE CALCULATED FROM METRIC VALUES.
DIMENSIONS BETWEEN MARKS ARE GUIDE DIMENSIONS.
THOMAS REGOUT INT. B.V. RESERVES THE RIGHT TO ALTER
NON-CUSTOMER SPECIFIC SPECIFICATIONS WITHOUT NOTICE.

Designer	R. Cornelisse	Gen.Tol.Dim.	± 0.5	Third angle projection	Material
Date	11-2-2021	Gen.Tol.Angle	± 0.5		Treatment
Approver		Gen.Roughness	Ra		Draw type
Date		Units	mm/deg.	Scale	1 : 2
Description					Doc.No.
TR7619 800 / 806 (19,1mm)					E000115555
Format	A1	THOMAS REGOUT INTERNATIONAL B.V.		Item No.	114-S39
STANDARD	114S39	LOCK-IN	114S39A	LOCK-OUT	114S39B
LOCK-IN & LOCK-OUT & FRONT-RELEASE	114S39C	Revision			
© THOMAS REGOUT INTERNATIONAL B.V. Industrieweg 40, 6219 NR, Maastricht, The Netherlands, +31 (0)43 351 66 66					00

PART NUMBER	114S39	114S39A	114S39B	114S39C
-------------	--------	---------	---------	---------